

Stigma & Health Disparities

Valerie A. Earnshaw, Ph.D.

NIH HEAL

June 1, 2020

Acknowledgments and Conflicts

2017-2021

Understanding and Addressing
Disclosure to Members of Social
Networks among People Recovering
from Substance Use Disorders
(K01DA042881; PI Earnshaw)

No conflicts of interest
to disclose.

2016-2020

Novel Stigma/Structural Interventions
for Increasing HIV/STI Testing from
BMSM
(R01MH109409; PI Eaton)

2017-2021

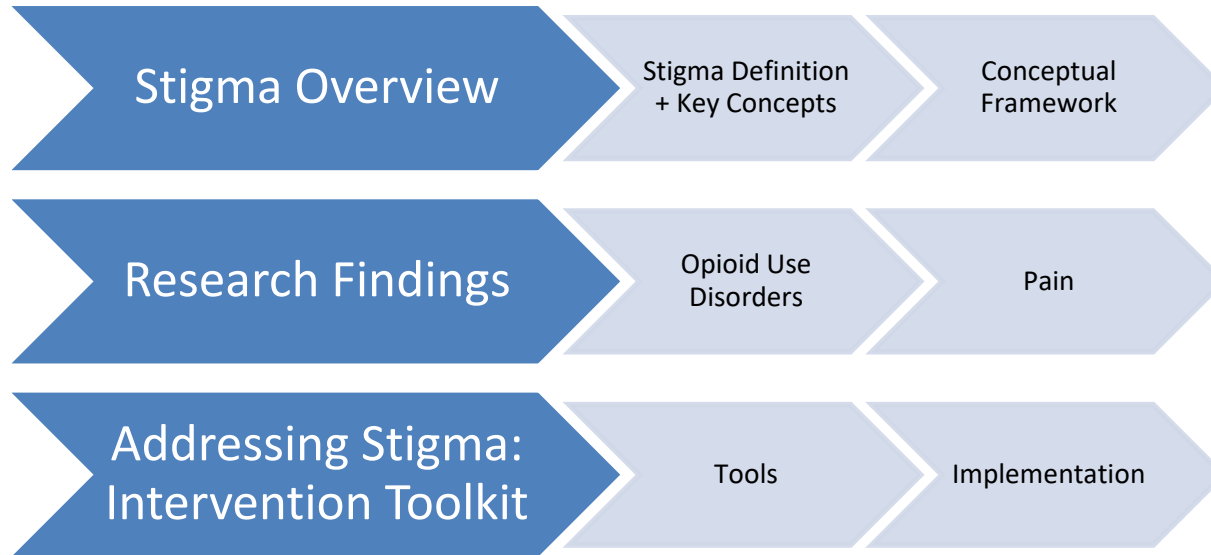
The Role of Resilience in Addressing
Racial Disparities in Adverse HIV-
Related Outcomes
(R01MH112386; PIs Howe + Keita)

2018-2021

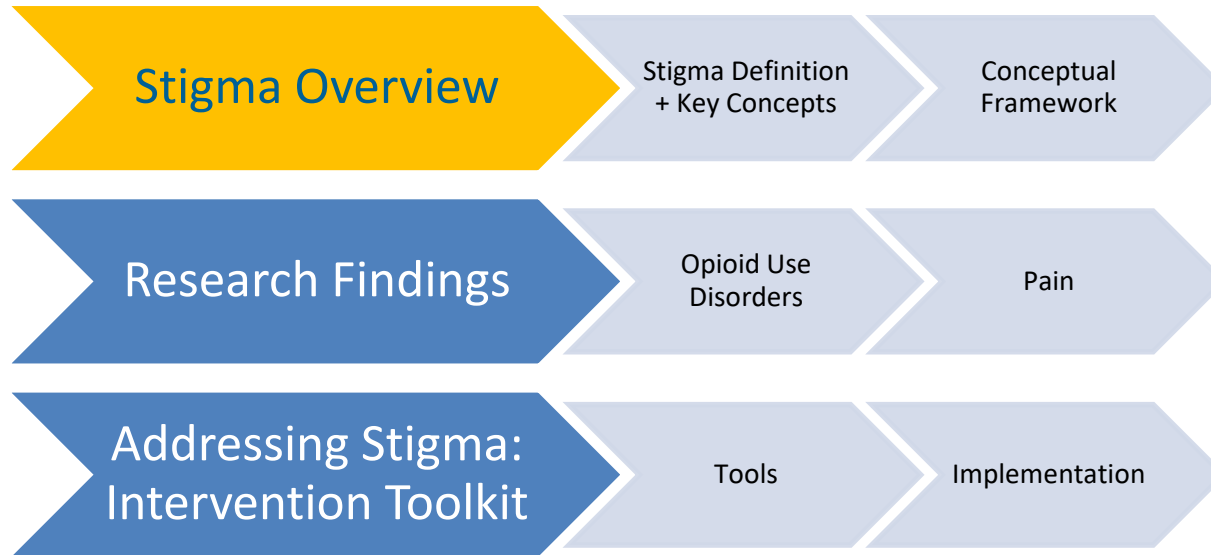
IMPART: A Provider-Assisted HIV
Partner Notification & Testing
Intervention for Prisoners in
Indonesia
(R34MH115779; PI Culbert)



Presentations Aims



Presentations Aims



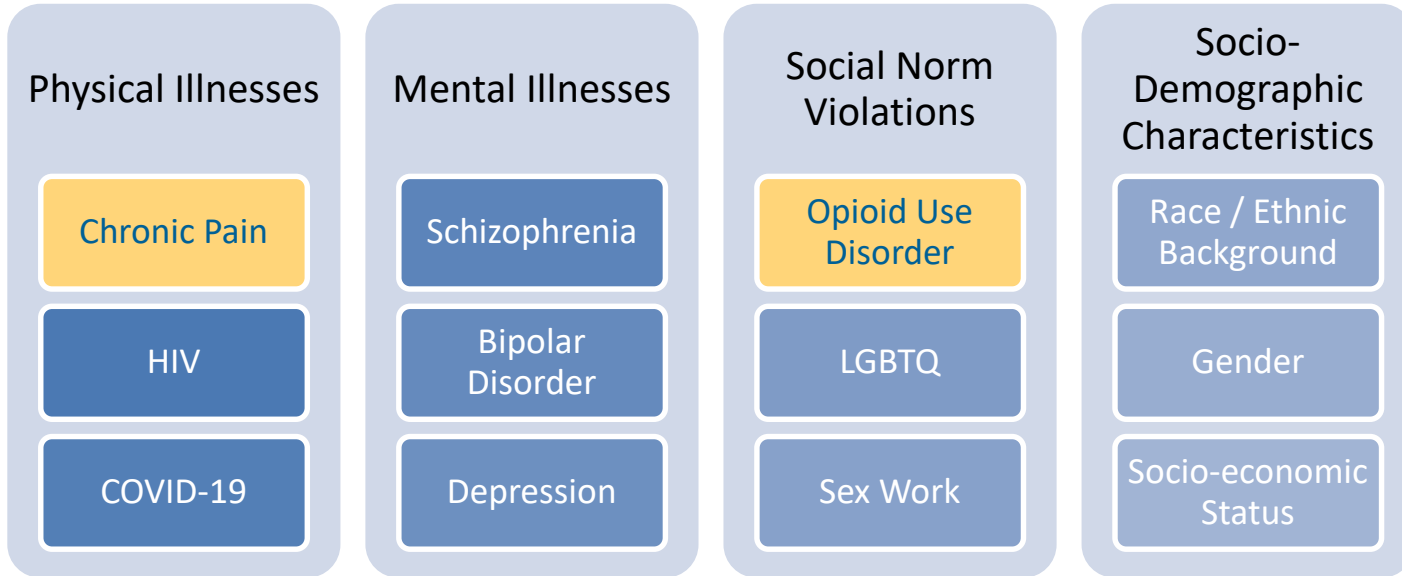
Stigma Defined

- **Social** devaluation and discrediting associated with a mark or characteristic¹

¹Goffman (1963), ²Link & Phelan (2001), ³Hatzenbuehler, Link, & Phelan (2013),



Stigma Defined



Stigma Defined

- **Social** devaluation and discrediting associated with a mark or characteristic¹
- Stigma results from a **social** process^{1,2}
- Co-occurrence of labeling, stereotyping, separation, status loss + discrimination within a context wherein power is exercised
 - Marks constructed as indicators of tarnished character
 - Used to justify discrimination toward and power loss of people with mark
- “Stigma is a **fundamental cause** of population health inequalities”³

¹Goffman (1963), ²Link & Phelan (2001), ³Hatzenbuehler, Link, & Phelan (2013),



Past: Siloed Approaches

Opioid Use Dis.

Pain

HIV

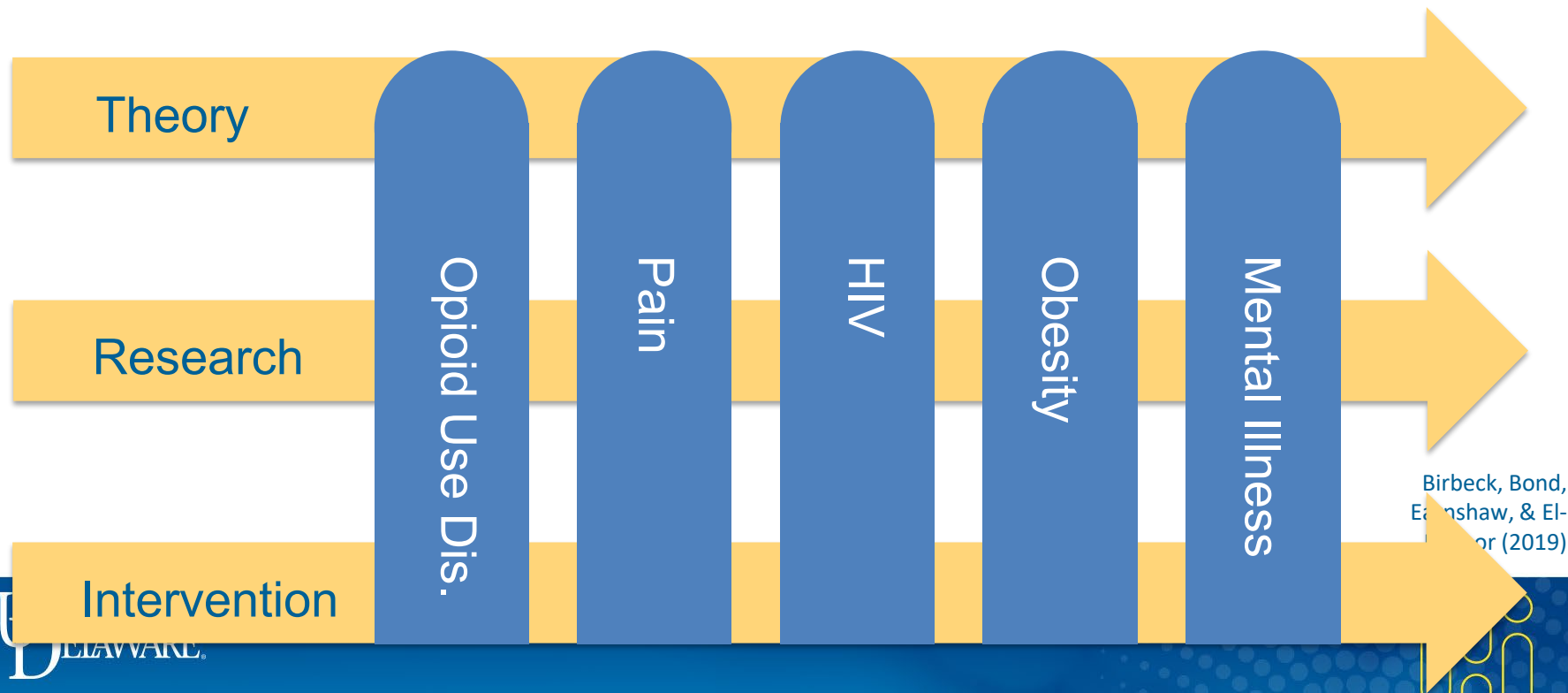
Obesity

Mental Illness

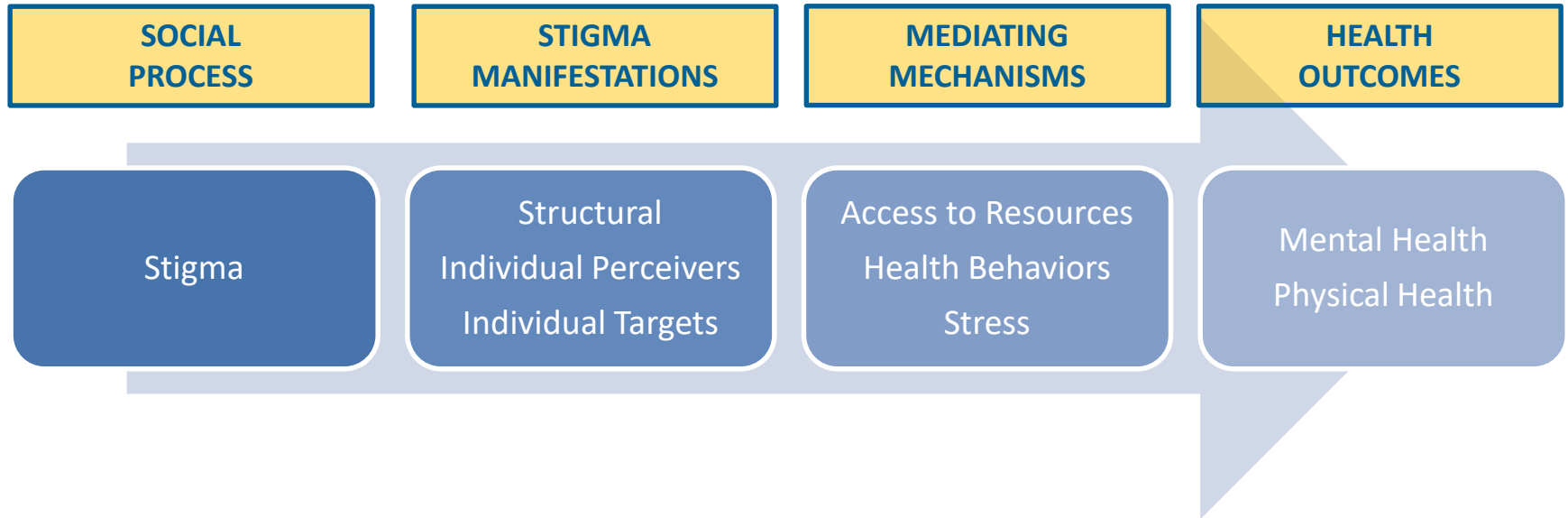
Birbeck, Bond,
Earnshaw, & El-
Nasoor (2019)



Future: Cross-Cutting Approaches



Cross-Cutting Conceptual Framework



Chaudoir, Andel, Earnshaw (2013); Hatzenbuehler, Link, & Phelan (2013); Stangl, Earnshaw, Logie, van Brakel, Simbayi, Barre, & Dovidio (2019)



Stigma Manifestations

Structural

- Societal Conditions
- Cultural Norms
- National, Institutional, Organizational Policies

Individual Perceiver

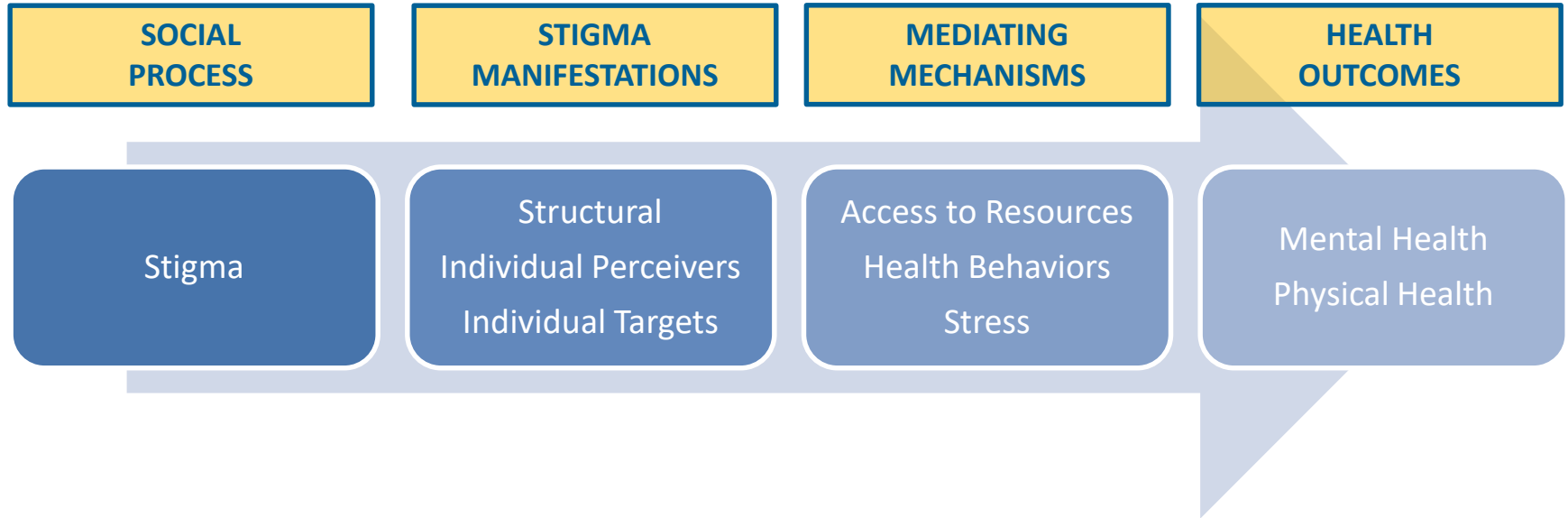
- Prejudice
- Stereotypes
- Discrimination

Individual Target

- Internalized Stigma
- Enacted/Experienced Stigma
- Anticipated Stigma



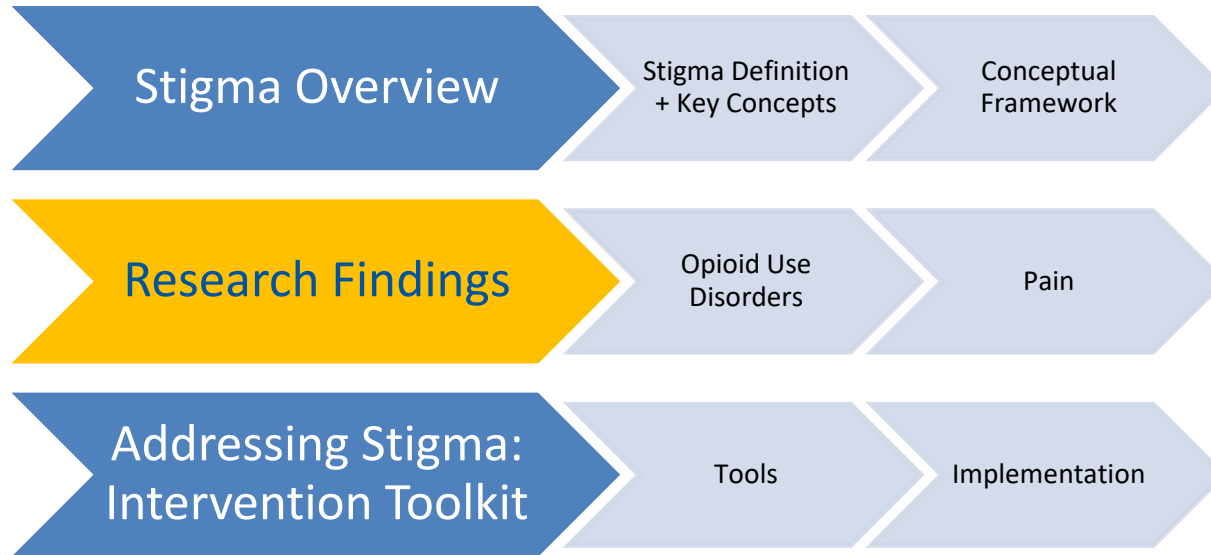
Cross-Cutting Conceptual Framework



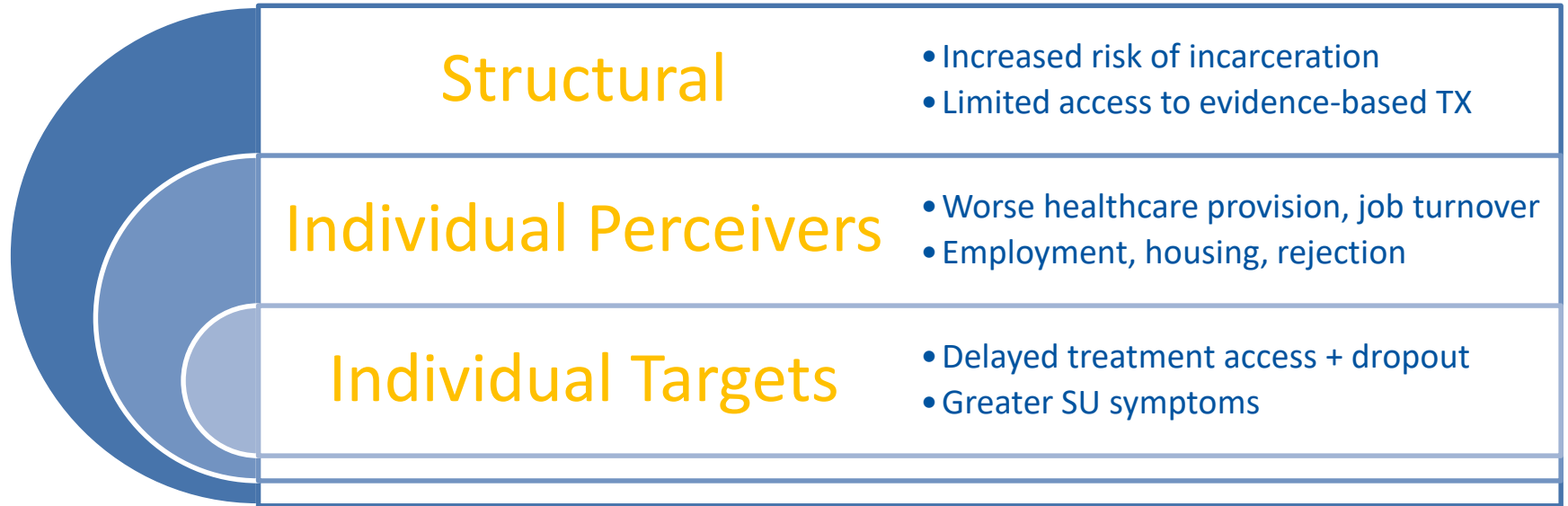
Chaudoir, Andel, Earnshaw (2013); Hatzenbuehler, Link, & Phelan (2013); Stangl, Earnshaw, Logie, van Brakel, Simbayi, Barre, & Dovidio (2019)



Presentations Aims



Research Findings: Opioid Use Disorders



Corrigan et al. (2017); Tsai et al (2019)



Research Findings: Pain

Structural

- Inadequate availability of TX options
- Insufficient coverage in med curricula

Individual Perceivers

- Discount pain reports, doubt credibility
- Dislike, low sympathy

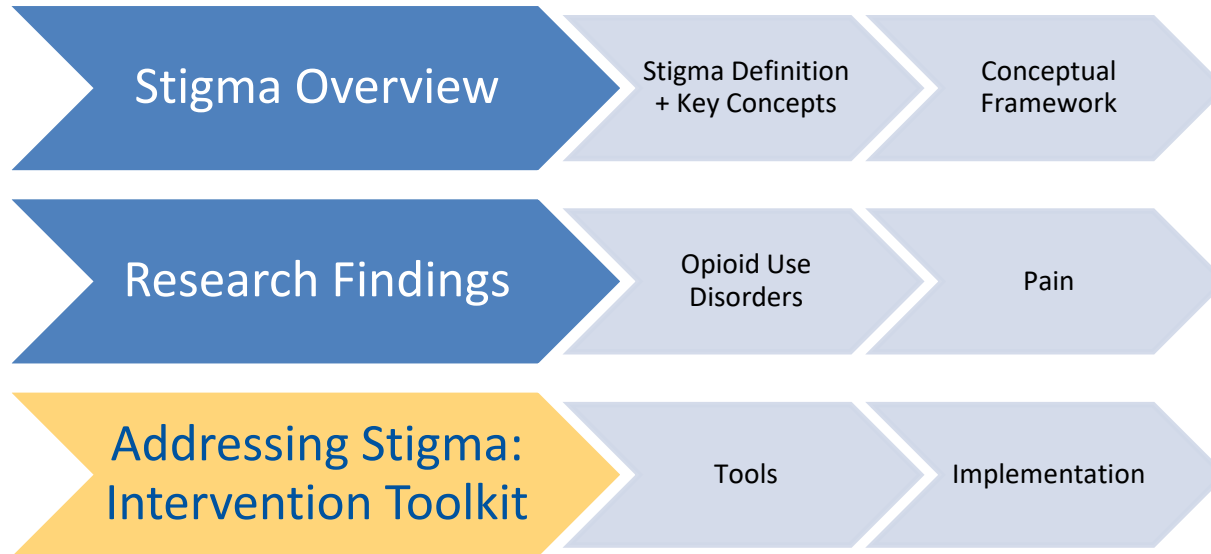
Individual Targets

- Question credibility of own experiences
- Worse re-habilitation outcomes

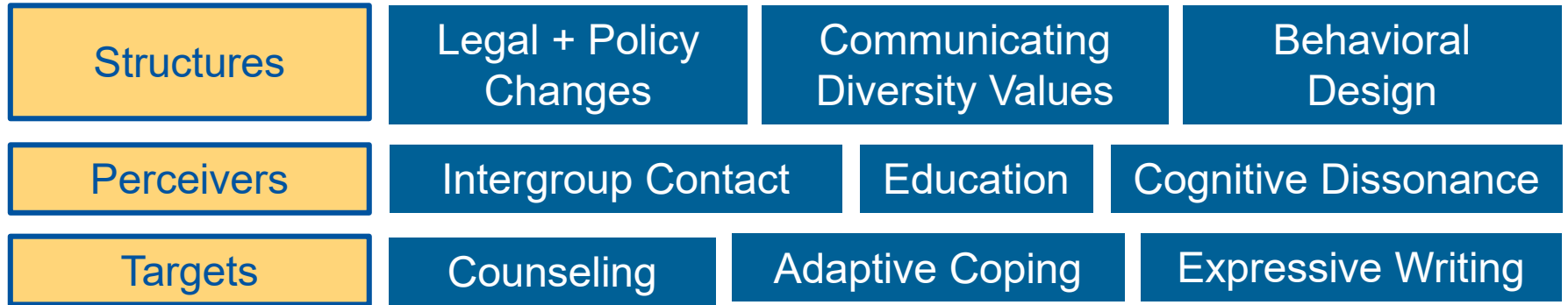
De Ruddere & Craig (2016); Newton et al. (2013)



Presentations Aims



Stigma Intervention Toolkit

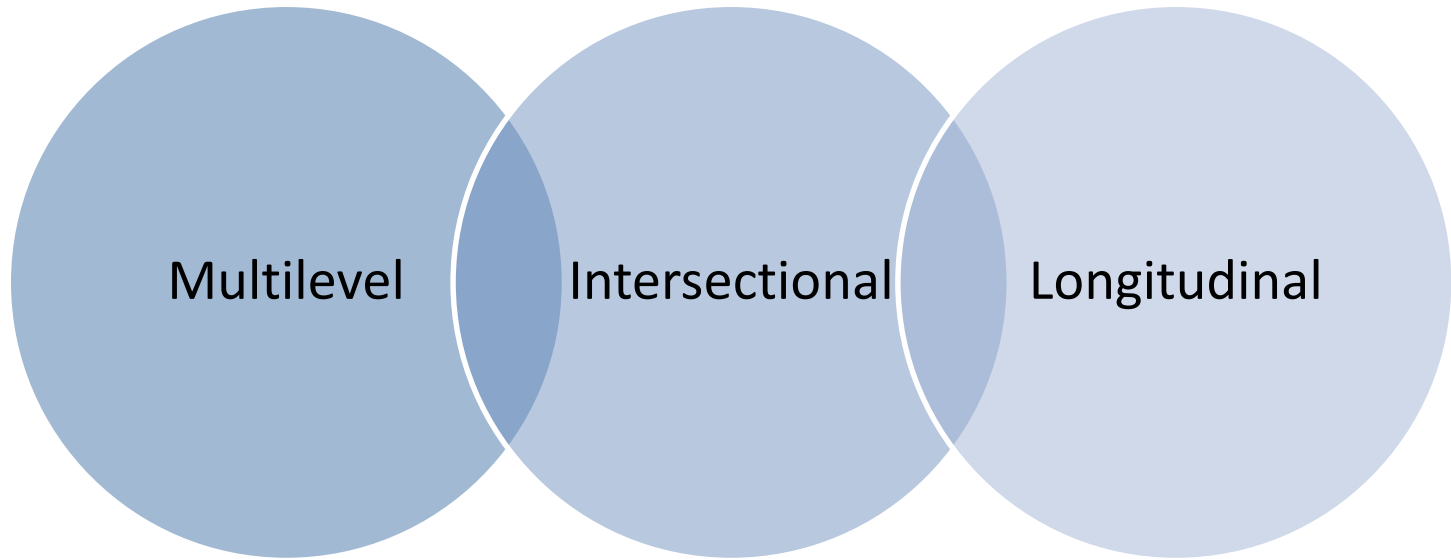


Chaudoir et al. (2017); Cook et al. (2014); Livingston et al. (2013); Rao et al. (2019); Stangl et al (2013)





Stigma Intervention Toolkit



Thank you!

- Contact:
 - Email: earnshaw@udel.edu
 - Website: <https://earnshawlab.org>
 - Twitter: @UDStigmaLab

