

2/01/2021

Bringing Cutting-Edge Research to the Prairie

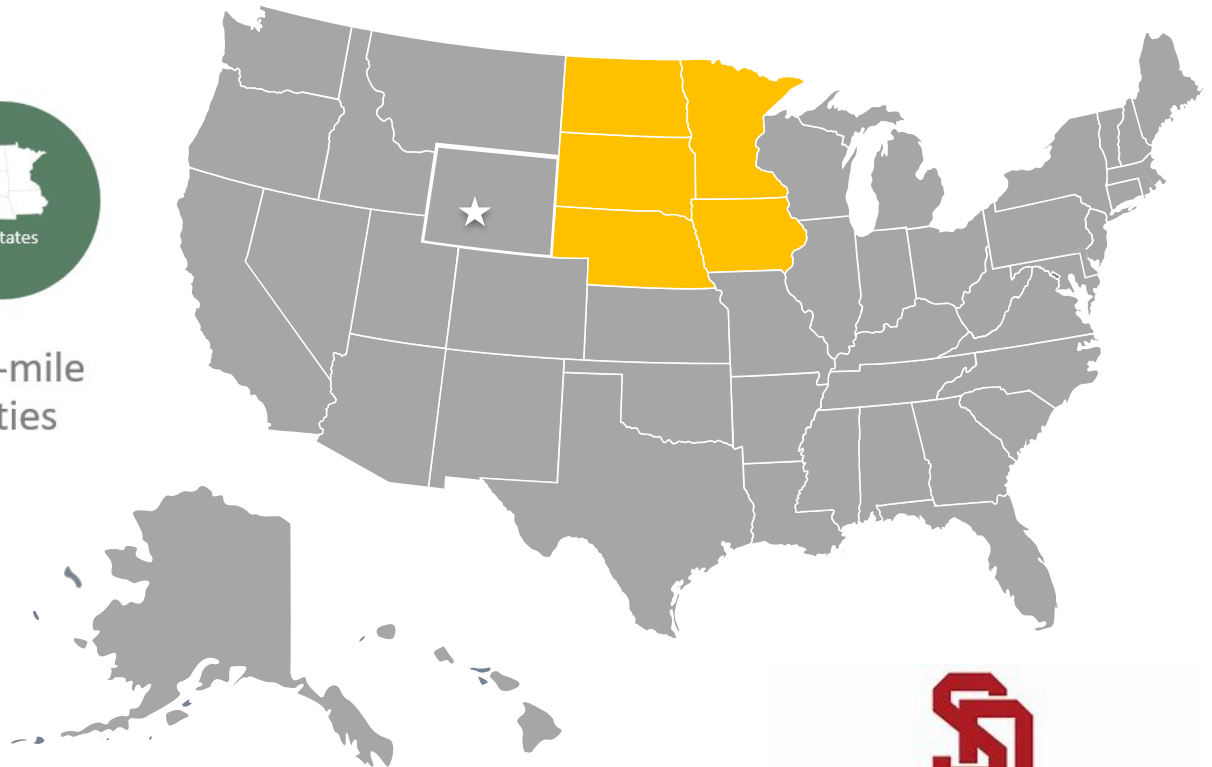
Amy Elliott

Avera 

Avera Health Footprint



Covers a 72,000-square-mile footprint and 86 counties



South Dakota Context



Photograph by Aaron Huey.



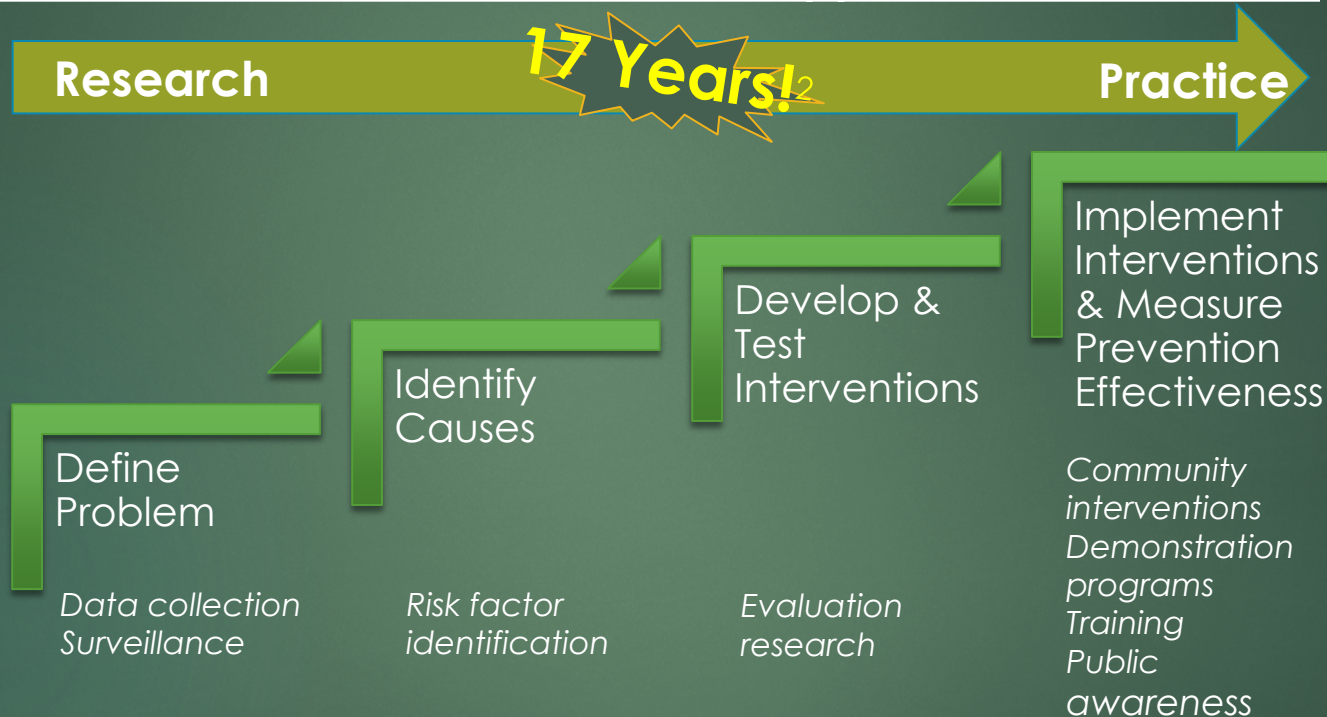
Photograph by Matthew Williams.



Photograph from www.american towns.com

Translational Research Context

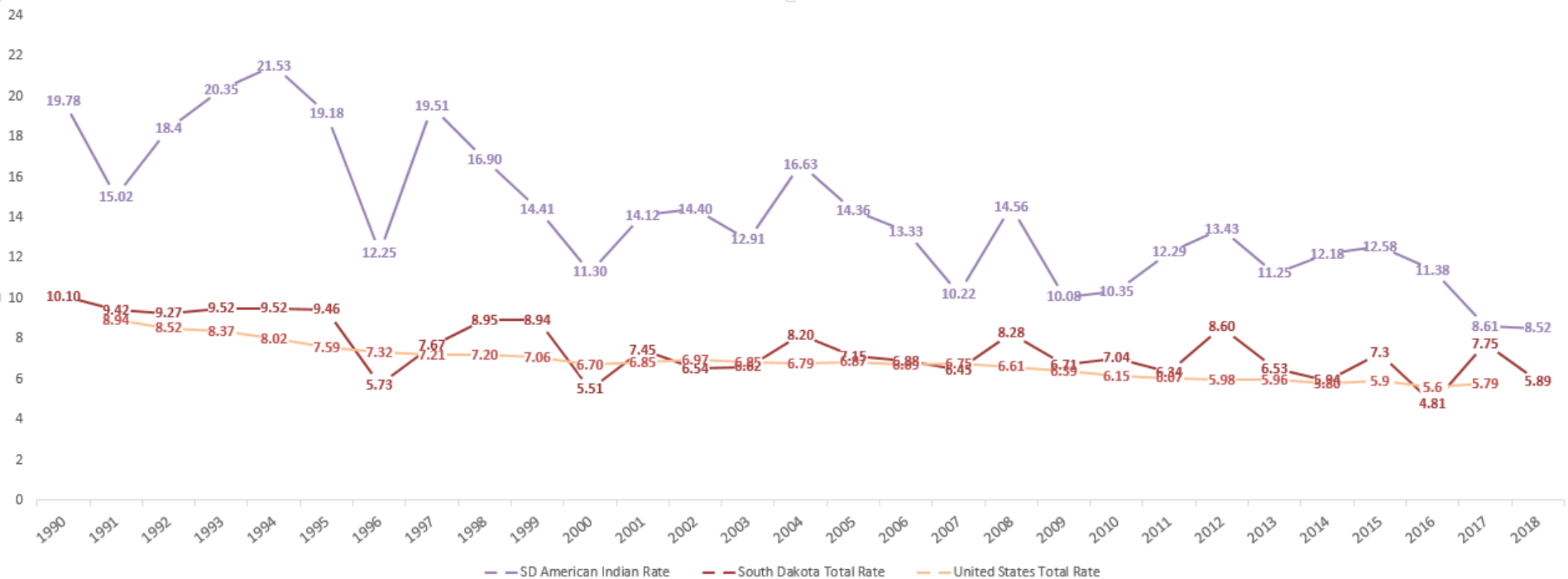
Public Health Model of a Scientific Approach to Prevention¹





Not all gloom and doom...

Infants Mortality by Race



Prenatal
Alcohol,
SIDS, and
Stillbirth

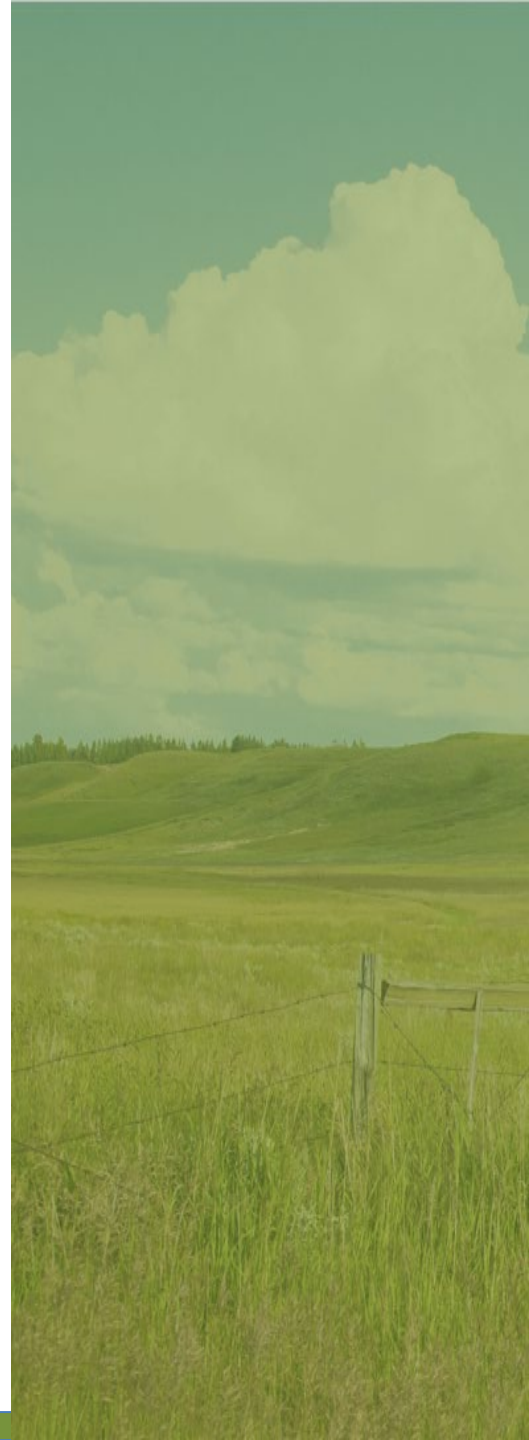


Phase I, 2003-2006: Development of hypotheses & protocols;
pilot/feasibility studies

Phase II, 2006-2017: Performance of full-scale, hypotheses-driven
studies (prospective & retrospective studies)

12,192 pregnancies enrolled

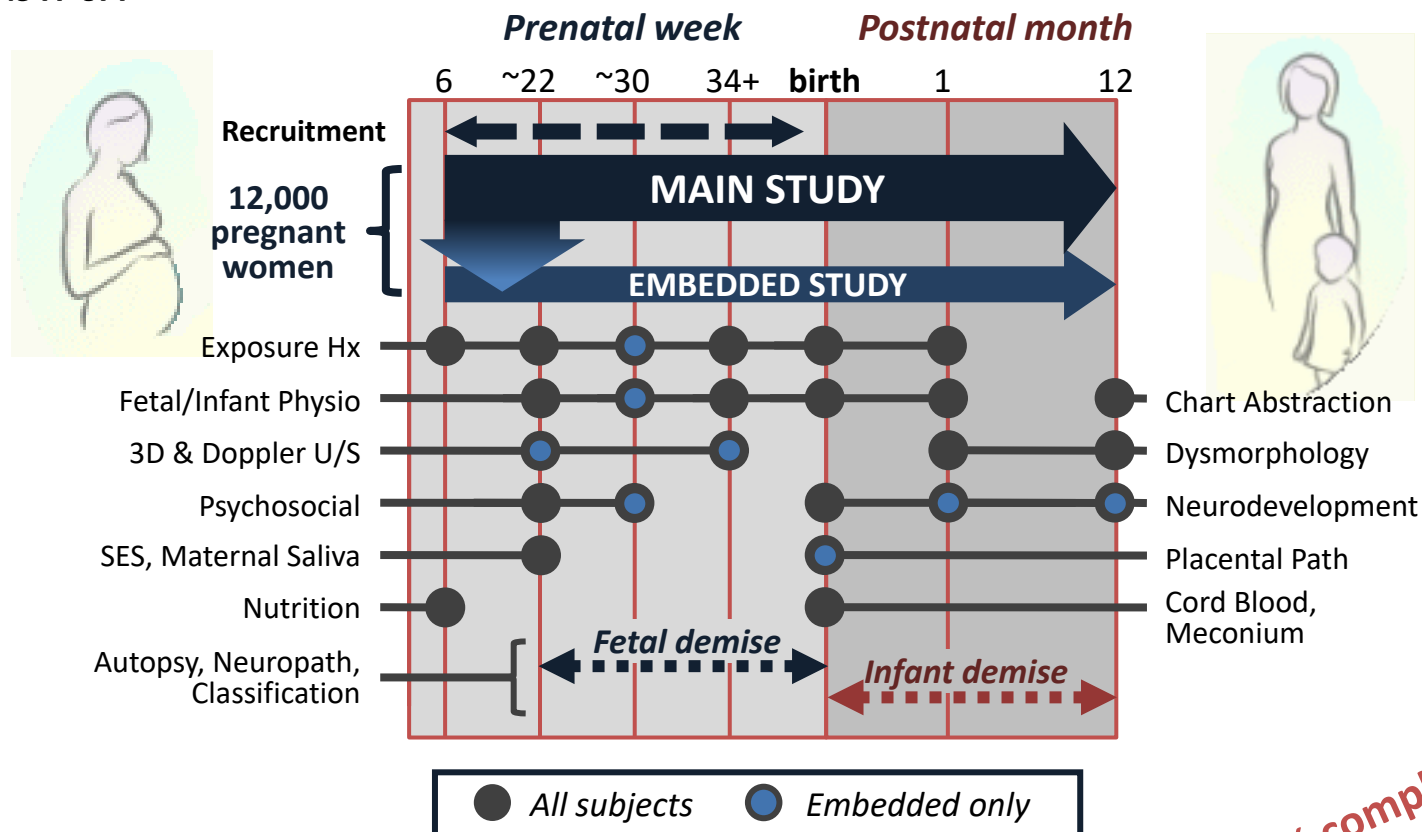
Dukes et al., 2014



Prenatal
Alcohol,
SIDS, and
Stillbirth



PASS Study Protocol



86% compliance for
study visits

12,192 pregnancies enrolled



Community Collaboration

American Indian Cultural Issues surrounding...

- Collection of tissue & bloods, particularly post-mortem
 - Individual choice, options on consent
- Genetics studies
 - Separate informational sheet on genetics studies

Research Appointment Attendance

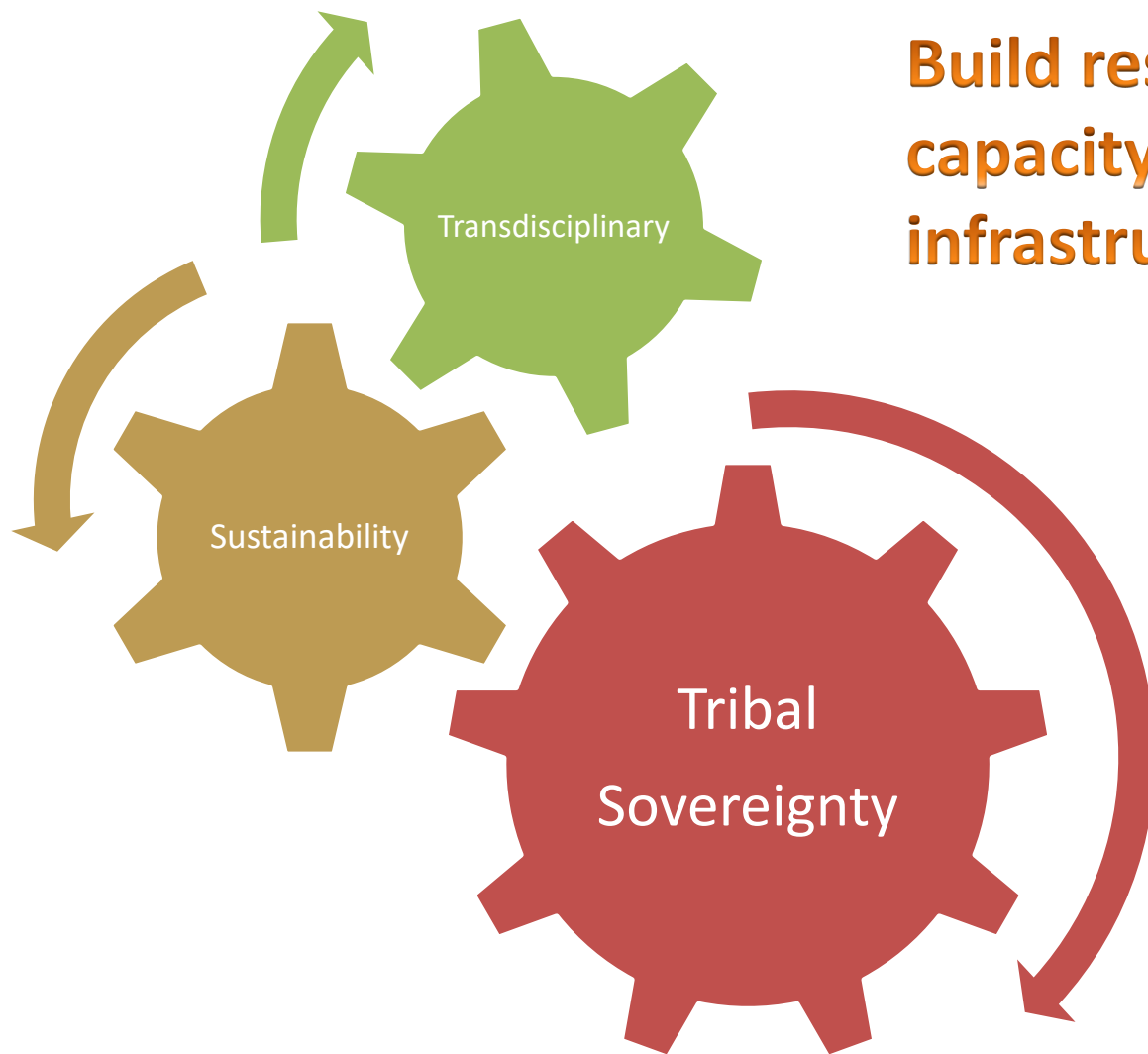


- **Overall Visit Compliance: 83.3%**
 - Consent for DNA for research: 98.8%
 - Consent for placental tissues for research: 97.8%
 - Consent for photographs of infant face: 98.8%
 - Withdrawal of overall study consent: 3%
 - Pregnancy outcome ascertainment rate: 96.5%

Collaborative Research Center for American Indian Health



Elliott et al., 2016; Kenyon et al., 2019



**Build research
capacity &
infrastructure**

**Collaboration &
Partnership**

Research Innovation

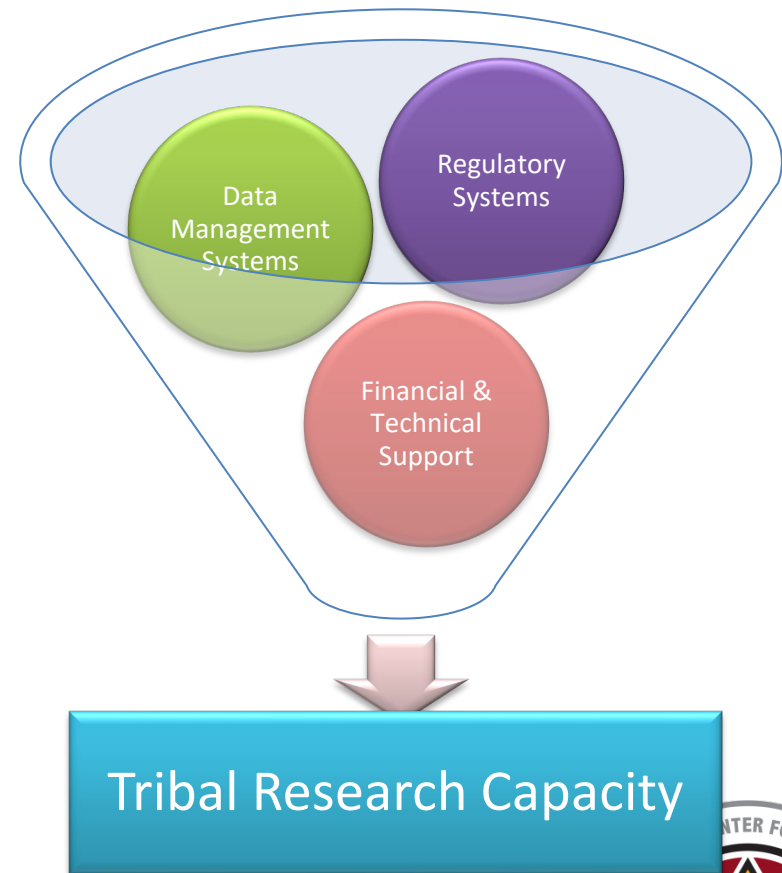


Building Tribal Research Infrastructure

Why? (The Need)



How? (The Tools)





Lessons
learned

A red pushpin is pinned to the top center of a yellow sticky note.

Reminder;

Have a sense of
urgency!

Community-Based Research

Engaging community-based partners is not an option; it is a priority



“The most productive, innovative teams were led by people who were *both* task- and relationship-oriented. What’s more, these leaders changed their style during the project.”

Gratton and Erickson, HBR, November 2007

<https://hbr.org/2007/11/eight-ways-to-build-collaborative-teams>

Have a good understanding...

- Your organizational culture
- Your role
- Long-term goal
- All of us operate in multiple cultures

Making it work

- Listen, listen, listen
 - May feel like hearing the same message, but there's a reason people feel the need to repeat it
 - It's important!!!
- Infallible follow-through
- Realizing this specific project or idea isn't the most important task on their plate
- Humility

Keys to success

- COMMUNICATION!
 - Team, department, institution, partners, community
- Having champions at every level of the organization
- Making everyone know they are part of a team
- Regular feedback

"Coming together is a beginning. Keeping together is progress. Working together is success."

- Henry Ford

Funding Acknowledgements

- **Safe PASSage Study:** NICHD/NIAAA/NIDCD U01/HD045935 (Elliott)
- **Safe Sleep:** NICHD R01/HD080544 (Elliott)
- **ECHO:** NIH OD UG3/OD023279 (Elliott)
- **hBCD:** NIDA/NICHD R34/DA050288 (Elliott)



Thank you



ECHO
Environmental influences
on Child Health Outcomes
A program supported by the NIH

Avera 
Research Institute
Center for Pediatric and
Community Research

